

There are three types of installation, and to avoid possible transmission noise or vibration it is important when refitting or renewing propeller shafts that the correct installation is used for the model concerned as detailed below. The illustrations are depicted as viewed from the rear of the vehicle.

The method of attaching the left hand side mounting bracket to the bearing housing and vehicle body is common to all installations. However, a different mounting bracket is used in application C.

Application 'A'

Dolomite manual change gearbox and automatic gearbox models. Both lugs on the propeller shaft centre bearing housing are located on the upper face of their respective mounting brackets, (Part No. 156985, 2 per vehicle) with the housing to mounting bracket setscrews, (Part No. HU.0806) inserted into the housing lugs from the underside of the mounting brackets. Against the head of each setscrew is a lock washer, (Part No. WLO208) and plain washer.

Application 'B'

Sprint manual change gearbox and automatic gearbox model. The left-hand mounting bracket is secured to the bearing housing as described in Application 'A'. The right-hand lug on the centre bearing housing is fitted below its mounting bracket. (Part No. 156985) i.e. the upper face of the weld nut on the housing lug to the underside of the mounting bracket with a plain washer between the weld nut and bracket. The following sequence should be followed:-

1. One plain washer (Part No. WP.0008) against head of setscrew (Part No. HU.0808).
2. Insert setscrew through mounting bracket from upside of bracket followed by a second plain washer (Part No. WP.0008).
3. Screw setscrew into weld nut and tighten, ensuring mounting bracket is lined up with housing.
4. Fit hexagon nut, (Part No. HN.2008) to setscrew and tighten.

Application 'C'

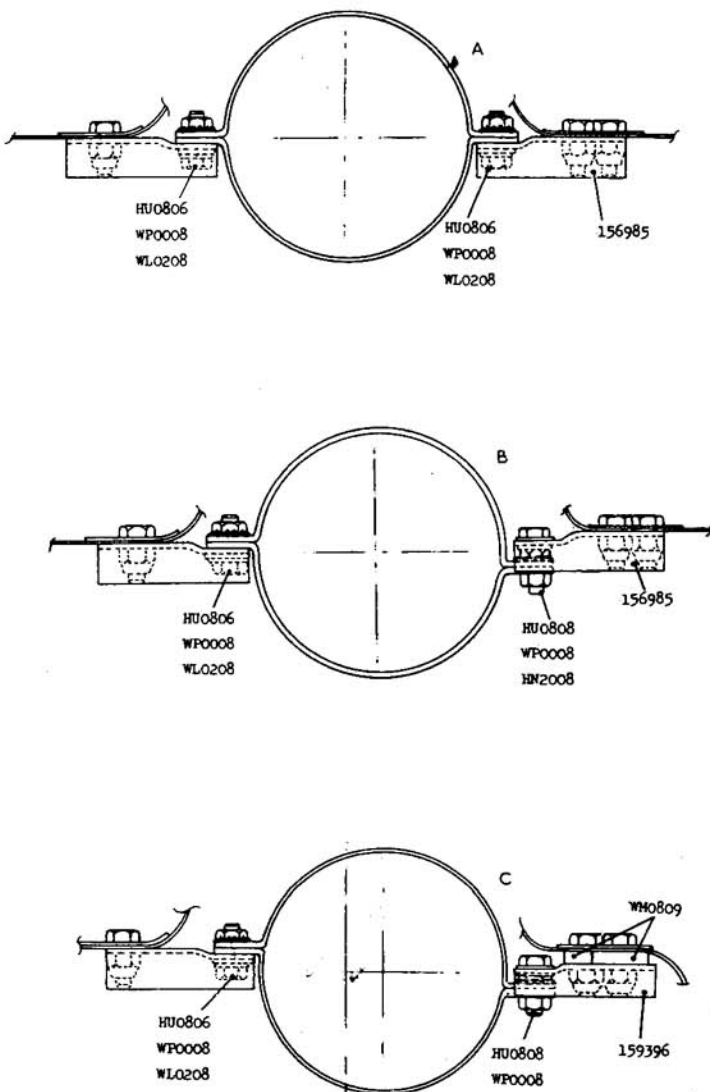
Dolomite automatic gearbox model only.

This model uses mounting bracket (Part No. 159396-2 off) see illustration (D). These brackets move the propeller shaft centre line 9.5 mm (0.375 in) to the right compared to the centre line on the other models.

The attachment of the left hand mounting bracket to the bearing housing is as described in Application 'A', whilst the right hand mounting bracket is attached as indicated in Application 'B'.

Additionally in Application 'C' two spacer washers (Part No. WM.0809) are fitted between the right hand mounting bracket and vehicle body, one for each retaining stud.

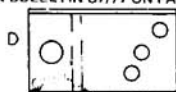
NOTE. 'Rosun' tubular press nuts are sometimes used as an alternative to the weld nuts illustrated.



PLEASE INSERT ILLUSTRATION 'D' UNDER EXISTING DIAGRAM IN BULLETIN C7/77 ON PAGE 7 OF 16.



150206



156985